

# AUTOMATION FOR A BETTER, SAFER KITCHEN

C

S

M

Cost Solutions®



The MenuPilot™ application, coupled with streamlined corporate management of menu data via the MenuCommand™ web portal, reduces dependence on hardware and increases emphasis on platform. Together, these facilitate the centralized management and communication of critical menu data and training materials to foodservice operations. DayMark also delivers companion hardware with the Matt85™ direct thermal label printer and Android tablet, facilitating on-demand production of shelf-life, food rotation and complex grab & go product labeling.

THE DIFFERENCE IS NIGHT AND DAY.™

800.847.0101

[daymarklabels.com](http://daymarklabels.com)

For more information contact: [membersupport@csmcostsolutions.com](mailto:membersupport@csmcostsolutions.com)

#3492-DIS  
072018

**DayMark®**  
Safety Systems

# Kitchen Automation Platform



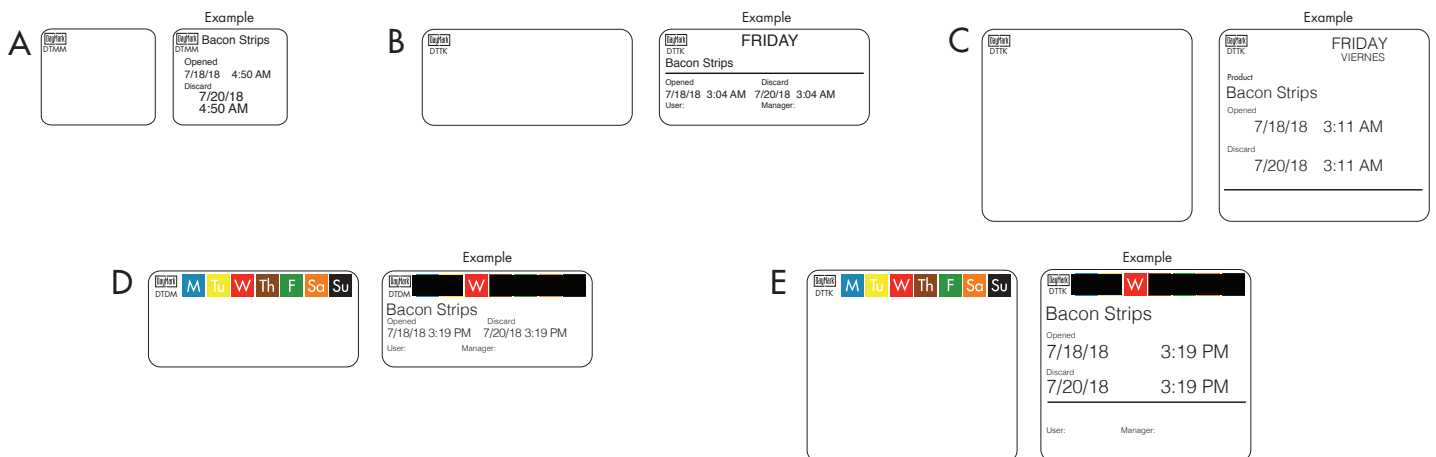
## Features and Benefits

- Accessible from any internet connection
- Shelf life, nutritional facts, allergen information and prep data can be organized, monitored and modified virtually anytime and anywhere
- Updates are securely and efficiently pulled in via the cloud
- Data changes can be communicated to staff at all locations immediately
- Seamlessly integrates with the Nutritics solution
- Video and recipe data can be uploaded at a central location and automatically shared with all connected store locations
- Provides a comprehensive overview, including announcements, account metrics and number of users currently using the platform
- Allows users to print labels wirelessly
- Eliminates the need to make costly repairs and maintain labor-intensive repair depots

## Complete Food Labeling System

	Item #	Description
A	<b>IT118534</b>	Matt85 Tablet with Cover
B	<b>IT118379</b>	Matt85 Printer
C	<b>IT118562</b>	Wall Mount Bracket for Matt85 Printer
D	<b>IT118589</b>	Multi-Flex Stand and Wall Mount for Matt85 Tablet
E	<b>IT118559</b>	G-Hold Megastick

## Direct Thermal Labels



FOOD  
SAFETY



KITCHEN  
AUTOMATION

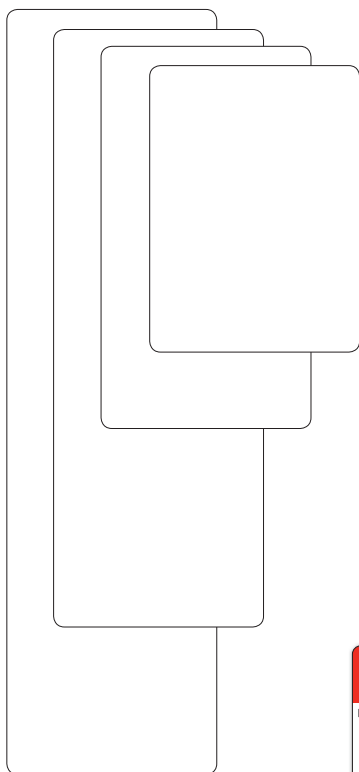
THE DIFFERENCE IS NIGHT AND DAY.™

For more information contact: [membersupport@csmcostsolutions.com](mailto:membersupport@csmcostsolutions.com)

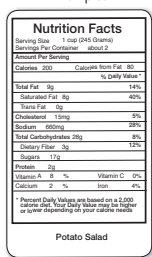


## Direct Thermal Labels

F-I



Examples

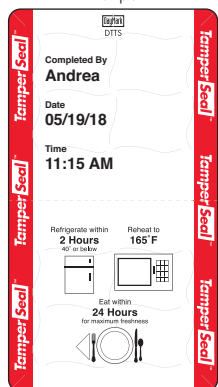


	Size	Description	Adhesive	Quantity	IT Code
A	1.2" x 1"	Blank Label	MoveMark™	2000/roll	<b>IT115739</b>
			DuraMark™	2000/roll	<b>IT115734</b>
			DissolveMark™	2000/roll	<b>IT115853</b>
			ToughMark™	2000/roll	<b>IT115695</b>
B	2.2" x 1"	Blank Label	DissolveMark™	2000/roll	<b>IT115691</b>
			MoveMark™	2000/roll	<b>IT115740</b>
			DuraMark™	2000/roll	<b>IT115735</b>
			ToughMark™	1000/roll	<b>IT115697</b>
C	2.2" x 2"	Blank Label	DissolveMark™	1000/roll	<b>IT115693</b>
			MoveMark™	1000/roll	<b>IT115741</b>
			DuraMark™	1000/roll	<b>IT115736</b>
			ToughMark™	2000/roll	<b>IT115696</b>
D	2.2" x 1"	Day of the Week	DissolveMark™	2000/roll	<b>IT115692</b>
			MoveMark™	2000/roll	<b>IT115742</b>
			ToughMark™	2000/roll	<b>IT115698</b>
E	2.2" x 2"	Day of the Week	DissolveMark™	1000/roll	<b>IT115694</b>
			MoveMark™	1000/roll	<b>IT115743</b>
			ToughMark™	1000/roll	<b>IT115698</b>
F	2.2" x 3"	Blank Label	DuraMark™	750/roll	<b>IT115737</b>
G	2.2" x 4"	Blank Label	DuraMark™	500/roll	<b>IT115738</b>
H	2.2" x 6.25"	Blank Label	DuraMark™	350/roll	<b>IT117418</b>
I	2.2" x 8"	Blank Label	DuraMark™	250/roll	<b>IT117814</b>
J	2.2" x 4"	Tamper Evident	TamperSeal™	500/roll	<b>IT118675</b>
K	2.2" x 6.25"	Tamper Evident	TamperSeal™	350/roll	<b>IT118676</b>

J, K



Example



\*Labels shown are not actual size.

800.847.0101

daymarkkabels.com

For more information contact: [membersupport@csmcostsolutions.com](mailto:membersupport@csmcostsolutions.com)



# AUTOMATED FOOD LABELING FOR A BETTER, SAFER KITCHEN



## Cloud-based Corporate Dashboard

Secure, centralized oversight of menu items, recipes and training information



## App-driven Kitchen Interface

Ensured efficiencies and food labeling compliance at the location level



## Plus...Wireless Hardware

Bluetooth-enabled, direct thermal printer and Android tablet

## ASK ABOUT INTEGRATION WITH NUTRITICS

Complete Recipe & Nutrition Calculation Software

## Labeling Adhesives for Every Application

DTDM



### DissolveMark™ - \$\$\$

- Dissolvable adhesive & label face
- Dissolves completely in 30 seconds in any water temperature
- Leaves no adhesive residue
- Only patented direct thermal, dissolving label
- Working temp. -40°F to 176°F
- Min. application temp. 21°F
- FSC®-certified

DTTK

### ToughMark™ - \$\$

- Repositionable adhesive
- Label face is virtually tear-proof
- Easiest to remove and transfer
- Leaves no adhesive buildup
- Working temp. -20°F to 250°F
- Min. application temp. 25°F

DTMM

### MoveMark™ - \$

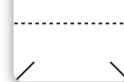
- Removable adhesive
- Easy to remove and transfer
- Leaves no adhesive buildup
- Working temp. -40°F to 160°F
- Min. application temp. 10°F

DTDK

### DuraMark™ - \$

- Permanent adhesive
- Working temp. -40°F to 160°F
- Min. application temp. 10°F

DTTS



### TamperSeal™ - \$\$

- Aggressive adhesive
- Tamper evident
- Working temp. -65°F to 220°F
- Min. application temp. 35°F



FOOD SAFETY



KITCHEN AUTOMATION

THE DIFFERENCE IS NIGHT AND DAY.™

For more information contact: [membersupport@csmcostsolutions.com](mailto:membersupport@csmcostsolutions.com)



Safety Systems